

CERTIFICATE OF LOCATION OF GOVERNMENT CORNER

North 1/4 of Section 19, Township 107N, Range 40W, 5th P.M.

STATE OF MINNESOTA, County of Murray

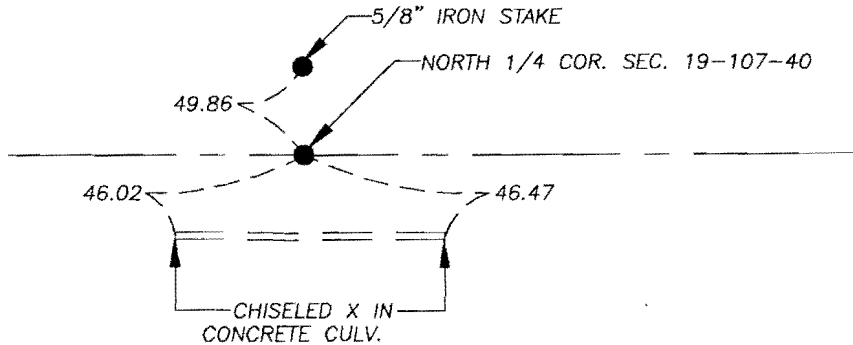
At the corner location shown on the sketch

On 10/06/08 found P.K. nail in centerline of County State Aid Highway Number 35

left monument as found lowered monument, removed monument (explain)

On 10/06/08 placed a survey marker spike with disc number 23008 after removing P.K. nail

SKETCH OF REFERENCE TIES



N. 1/4 COR. COORDINATES
179348.41 N
519202.42 E
MURRAY CO. COORDINATES
NAD 83 (2007)

I hereby certify that this document and the data contained herein was prepared by me or under my direct supervision.

Perry L. Giesbe
SIGNATURE

10-23-08
DATE

MN. LICENSE NO. 23008

Land Surveyor, Professional Engineer

County Surveyor, County Engineer

OFFICE OF THE COUNTY RECORDER

I hereby certify that this document was filed in the Co. Recorder's Office at _____ on the

_____ day of OCT 28 2008

County Recorder James V. Johnson
By _____, Deputy

DOCUMENT NO. _____

Statement of Evidence

Original Township Plat indicated Township lines were surveyed by J.W. Myers with date of contract of June 22nd 1861 and subdivision were surveyed by L. Brockman with date of contract of July 6th 1861.

Murray County Highway Department records indicated that a field stone was found on May 1, 1989 with a 3/4" X 24" Rebar being placed above it. Records also indicated a steel pin was found with ties made on Aug. 19, 1994.

On 10/06/08 we found a p.k. nail at road surface fitting closely with prior ties. We removed p.k. nail and found strong signal under the p.k. location. We placed survey marker spike with disc number 23008.



Perry L. Zieske
10-23-08